



**Quick  
User  
Guide**



**Quick tips to get started with Smileyscope**

# How do I use Smileyscope?

1

## Set up the VR experience

- Wipe down the device and remove faceplate from headset
- Hold down the red button to turn on and select 'Get Started'
- Select the program (Therapy, Breathe, Relax)<sup>1</sup>
- Select patient age and procedural length
- Select the procedural site
- Re-connect faceplate to the headset

2

## Introduce headset to patient

- Explain to patient that they will go on an underwater adventure during their procedure. Their job is to stay still and find their favourite animal
- Have the patient sit in a comfortable position and place the headset on

3

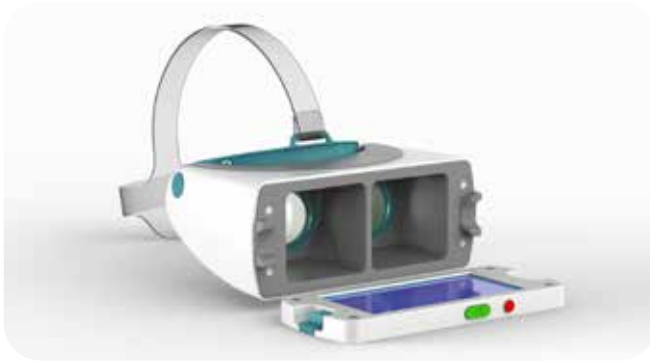
## Triple-click to start

- Press the green button 3 times to start the adventure

4

## Wipe down and recharge

- Wipe down between each patient
- Recharge device between uses



*Headset with  
faceplate removed*



*Program  
Selection screen*



*Session  
Selection screen*



*Procedure Site  
Selection screen*

# Frequently Asked Questions

AGES

4+

What ages is Smileyscope for?

Smileyscope has been clinically tested and is proven to be suitable for ages 4+ years<sup>1</sup>



Is Smileyscope infection control compatible?

Yes, Smileyscope is engineered to meet hospital cleaning standards. All materials are medical grade and the device has antimicrobial protection (Microban®).



Is Smileyscope clinically tested?

Yes, Smileyscope has been proven in two randomized clinical trials to reduce pain, anxiety and the need for restraints during pediatric needle procedures.<sup>1</sup>

↓ 60% child pain

↓ 40% child anxiety

↓ 48% restraints



Is Smileyscope suitable for patients with glasses?

Yes, Smileyscope can be placed directly over a patient's glasses. Carefully place headset over the glasses then fit the headband.



How long does the battery last?

The battery will provide 3-4 hours of continuous use. The device will go to sleep after 10 secs of inactivity.



Does Smileyscope have training videos?

Yes, there are 3 videos to support Smileyscope use that can be viewed at

[smileyscope.com/professionals](https://smileyscope.com/professionals):

- Clinician training
- Tips & tricks
- Infection control



Is Smileyscope not recommended for any patients?

Smileyscope should not be used on a patient if a contraindication is present, including:

- Neuromuscular compromise
- Contact infection precautions
- Unstable/deteriorating condition
- Epilepsy
- Skin hypersensitivity
- Poor skin integrity



Who can I contact for questions/technical issues?

Please contact [info@smileyscope.com](mailto:info@smileyscope.com) or call 888 300 7117 (USA), 1800 870 396 (Australia) for any questions or technical issues.

<sup>1</sup> Chan et al. (2019) Virtual Reality for pediatric procedural pain, The J of Peds

For more information, visit [smileyscope.com](https://smileyscope.com)